



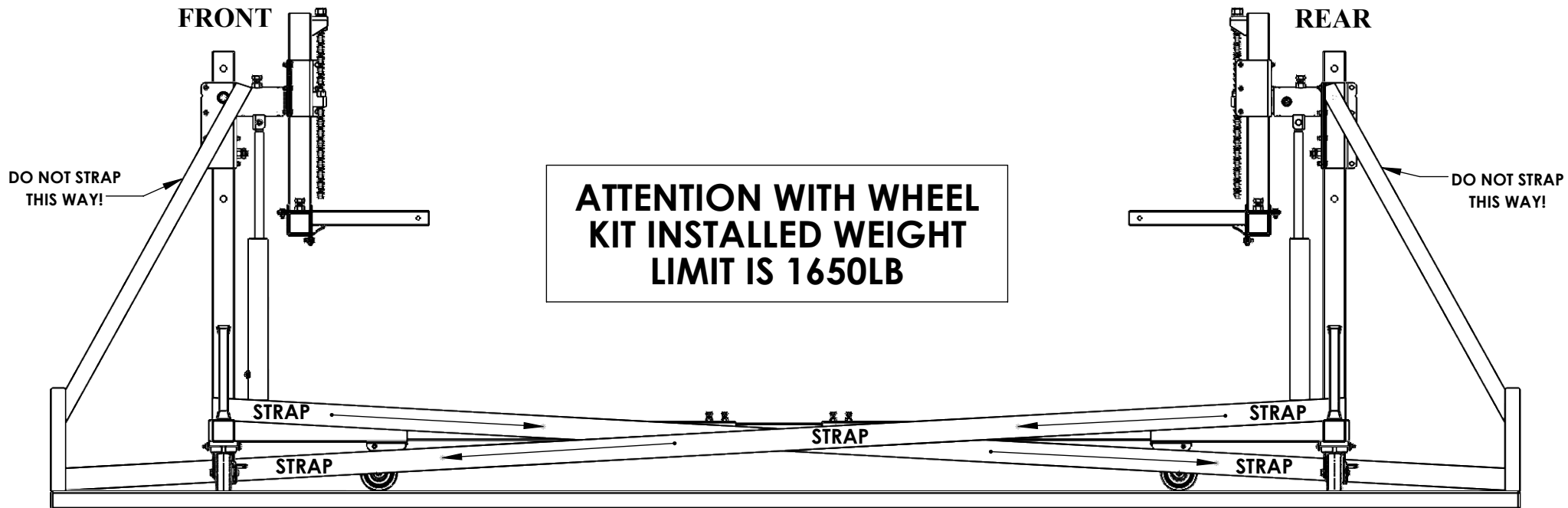
675 N 600 W STE 2 LOGAN UT. 84321

email: info@autotwirler.com website: www.autotwirler.com

phone #: 1 (435) 752-3921

TRAILER TIEDOWN INSTRUCTIONS

1. POSITION THE ROTISSERIE CENTERED ON THE TRAILER AND SET THE CASTER WHEEL LOCKS.
2. ATTACH TIE DOWN STRAP TO THE BASE OF THE ROTISSERIE UPRIGHT THAT IS ON THE REAR END OF THE TRAILER. CONNECT THE OPPOSITE END OF THE STRAP TO THE FRONT OF THE TRAILER.
3. ATTACH TIE DOWN STRAP TO THE BASE OF THE ROTISSERIE UPRIGHT THAT IS ON THE FRONT END OF THE TRAILER. CONNECT THE OPPOSITE END OF THE STRAP TO THE REAR OF THE TRAILER.
4. WITH BOTH STRAPS ATTACHED AND PULLING THE ROTISSERIE INTO ITSELF, TIGHTEN THE STRAPS AND MAKE SURE THE STRAPS ARE SUCURE FOR SAFE TRANSPORTATION OF THE ROTISSERIE.
5. AFTER SECURING THE ROTISSERIE BY THE FRONT AND REAR, STRAP BASE OF ROTISSERIE FROM SIDE TO SIDE ON TRAILER SO THE ROTISSERIE CAN NOT MOVE IN ANY DIRECTION.



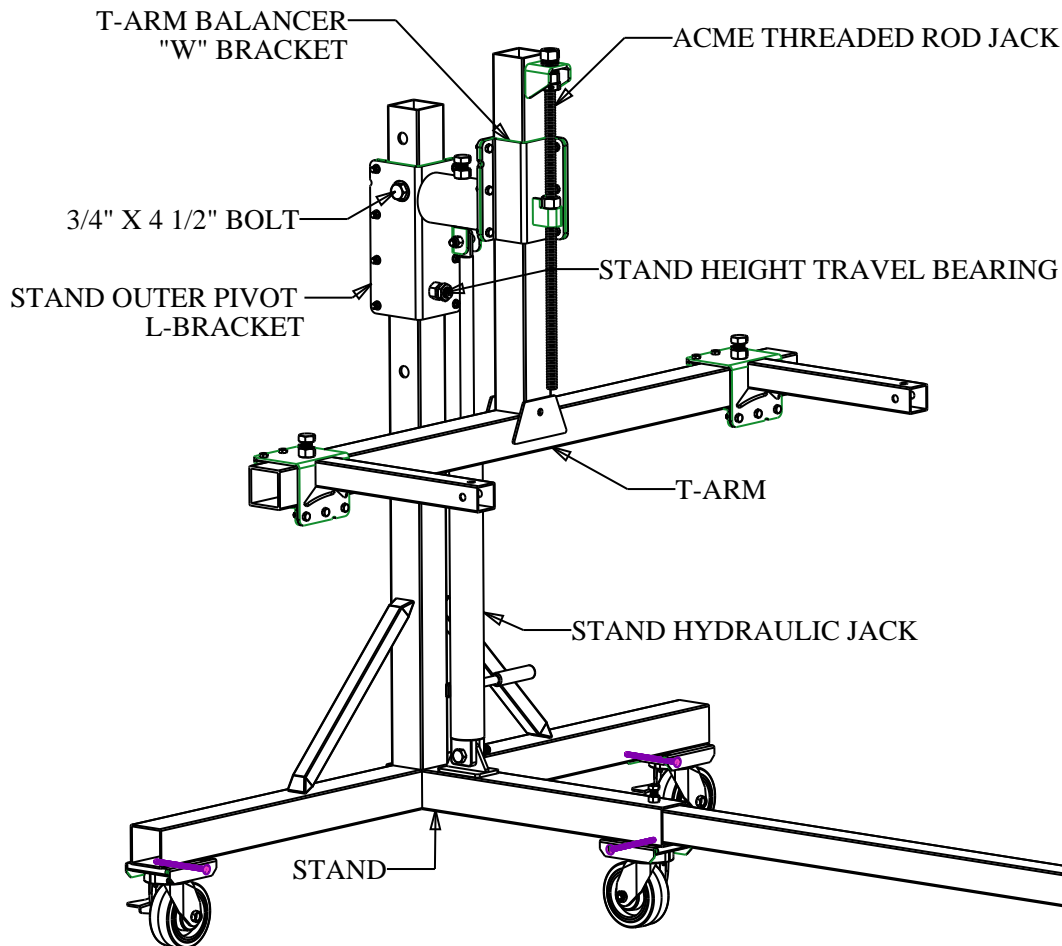
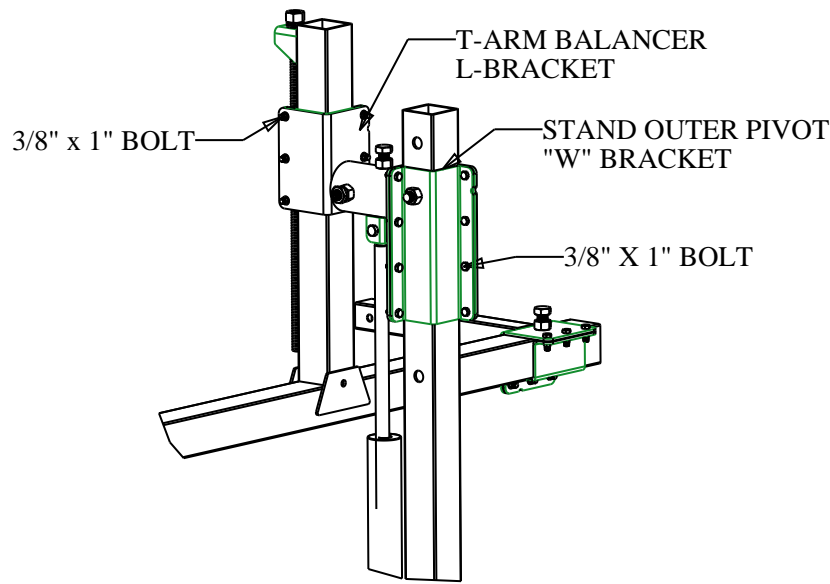
Auto Twirler Jack Instructions

Adjusting the Stand Hydraulic Jack

1. Before you raise or lower the Auto Twirler Pro or Elite you need to remove the 3/4" x 4 1/2" bolt with accompanying nut and washer.
2. Loosen all eight 3/8" x 1" bolt and nuts located on the L & W bracket clamp. Loosen them just enough to allow the jack to be able to raise or lower.
3. Adjust the rotisserie to the height desired. Reinsert the 3/4" x 4 1/2" bolt with accompanying nut and washer, make sure it is securely tightened.
4. Re-tighten all eight of the 3/8" x 1" bolts and nuts to cause the L & W bracket to clamp down securely to the Stand.
5. Readjust the Height Travel Bearing by snugging it up and then backing it off 1/4 turn and locking the bolt down with the lock nut.

Adjusting the T-Arm Jack

1. Loosen all six 3/8" x 1" bolt and nuts located on the L & W bracket clamp. Loosen them just enough to allow the jack to be able to raise or lower.
2. To move the jack turn the Acme nut that is welded to the top of the Acme threaded rod jack. Adjust the T-Arm to the desired height.
3. Re-tighten all six of the 3/8" x 1" bolts and nuts to cause the L & W bracket to clamp down securely to the T-Arm.



Reassemble of a pivot on a Pro Rotisserie

1. If the T arm is attached to the inner pivot it will need to be removed.
2. Make sure the O ring is seated in the Groove closets to the bracket on the Inner Pivot Piece.
3. Using a very stiff grease place 24 of the 3/8" bearings in the groove next to the O-ring and 24 of the 3/8" bearings in the groove farthest from the Bracket.
4. Gently slide the inner pivot, with the 3/8" bearings into the outer pivot.
5. Line up the empty groove on the inner pivot with the hole on the side of the outer pivot part.
6. Drop in a 5/8" bearing.
7. Tighten down the set screw until it is snug up against the 5/8" bearing.
8. Back the set screw off about 1/4 turn.
9. Tighten the Set/Lock nut down on the Set screw. This will hold the 5/8" Bearing in the groove. Which will keep the pivot intact.
10. Remount the T arm to the Inner pivot.



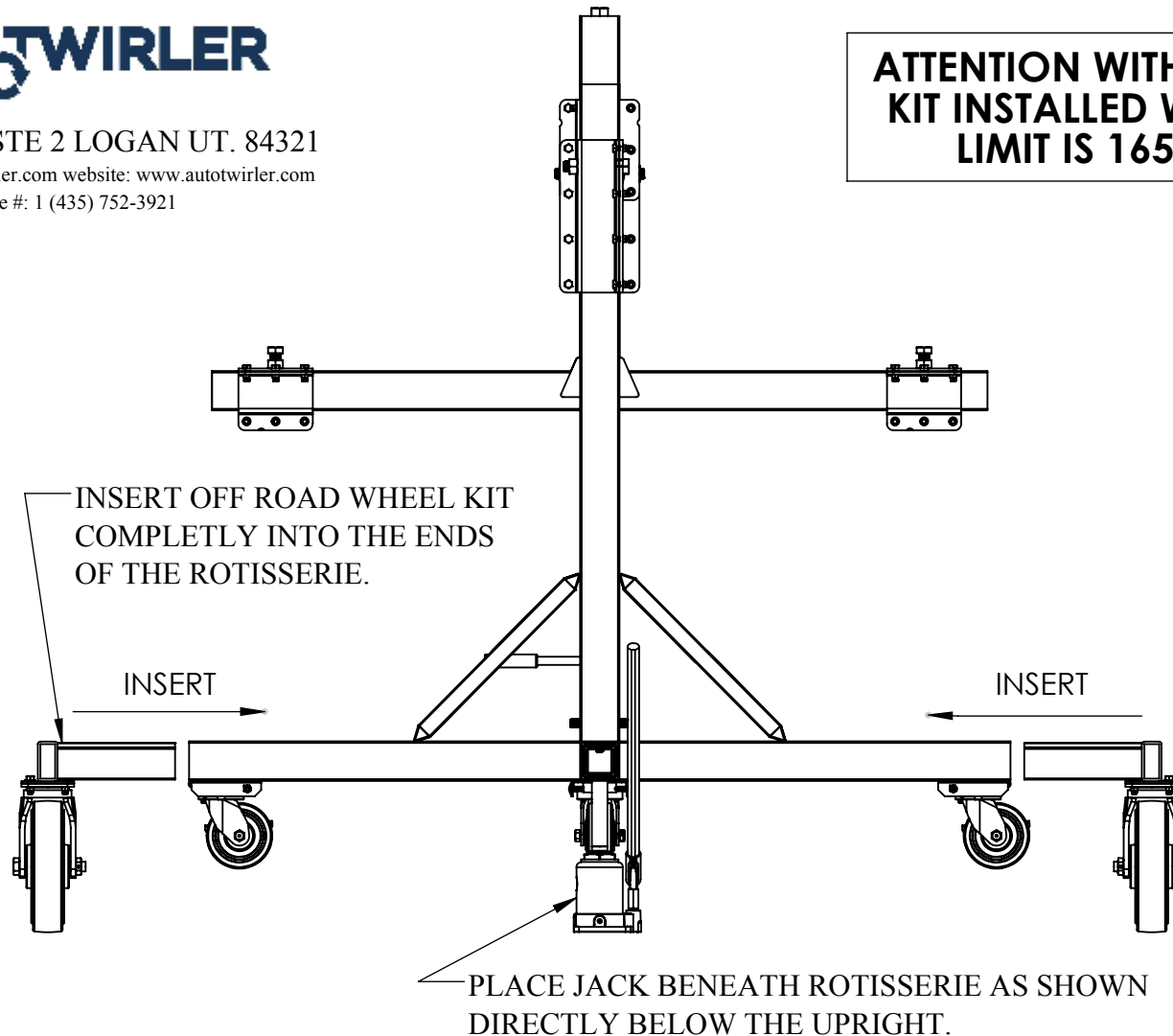


675 N 600 W STE 2 LOGAN UT. 84321

email: info@autotwirler.com website: www.autotwirler.com

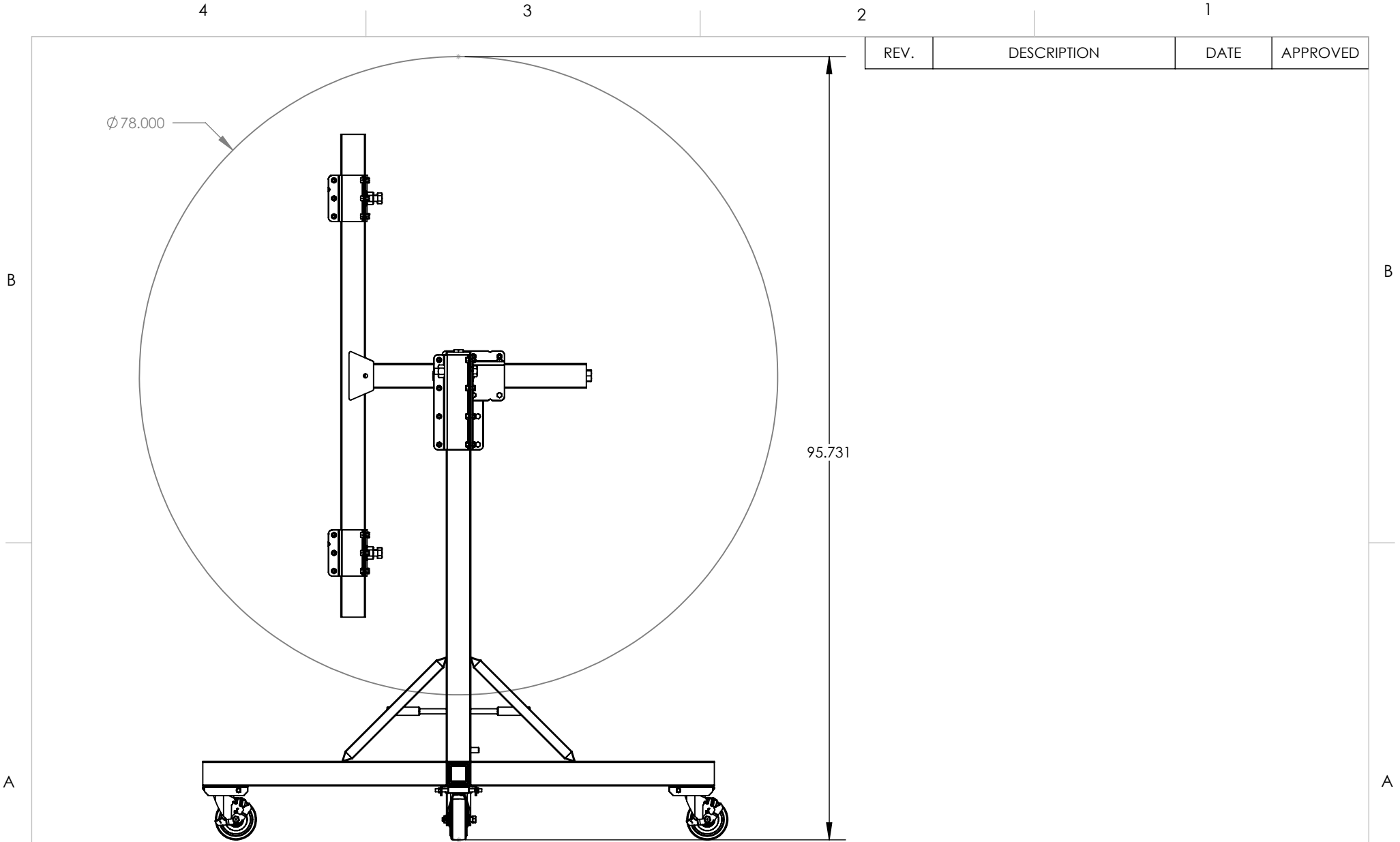
phone #: 1 (435) 752-3921

**ATTENTION WITH WHEEL
KIT INSTALLED WEIGHT
LIMIT IS 1650LB**



OFF ROAD WHEEL KIT INSTRUCTIONS

1. Chock wheels on the opposite end of the rotisserie that you are jacking up.
2. Place jack directly under rotisserie stand. (See picture)
3. Raise jack high enough to easily insert the Off Road Wheel Kit.
4. Position wheels to extend inside of the rotisserie so they don't extend the length of the rotisserie.
5. Insert Wheel Kit wheels all the way in until it stops. (See picture)
6. Lower the Jack and repeat all of the steps for the opposite end.



REV.	DESCRIPTION	DATE	APPROVED
------	-------------	------	----------

NOTE:
1. DIMENSIONS MAY VARY DEPENDING ON HEIGHT, WIDTH, & BALANCE CENTER OF VEHICLE.

PROPRIETARY AND CONFIDENTIAL
THE INFORMATION CONTAINED IN THIS DRAWING IS THE SOLE PROPERTY OF DUTRO CO. ANY REPRODUCTION IN PART OR AS A WHOLE WITHOUT THE WRITTEN PERMISSION OF DUTRO CO. IS PROHIBITED.

Dutro
COMPANY
675 N 600W PHONE: 435-752-3921
LOGAN, UT 84321 FAX: 435-752-6360

UNLESS OTHERWISE SPECIFIED:

DIMENSIONS ARE IN INCHES
TOLERANCES:
FRACTIONAL: $\pm 1/32$
ANGULAR: $\pm .5^\circ$ BEND $\pm .03$
ONE PLACE DECIMAL = $\pm .1$
TWO PLACE DECIMAL = $\pm .03$
THREE PLACE DECIMAL = $\pm .005$

PROJECT NAME:		AUTO TWIRLER ROTISSERIE		CUSTOMER:	AUTO TWIRLER	REV
MATERIAL:		STEEL				A
FINISH:		STANDARD COLOR		DESCRIPTION:	PRO ROTISSERIE	SIZE
MODELED BY:		BHS	DATE: 9/7/2017			
DRAWN BY:		BHS	DATE: 9/7/2017	PART#:	AT-PRO-AS	A
CHECKED BY:			DATE:	DWG: AT-PRO-90DEGREE		
DIR: C:\CAD_FILES_VAULT\CAD FILES\AUTOTWIRLER\ROTISSERIES\						SHEET 1 OF 1