

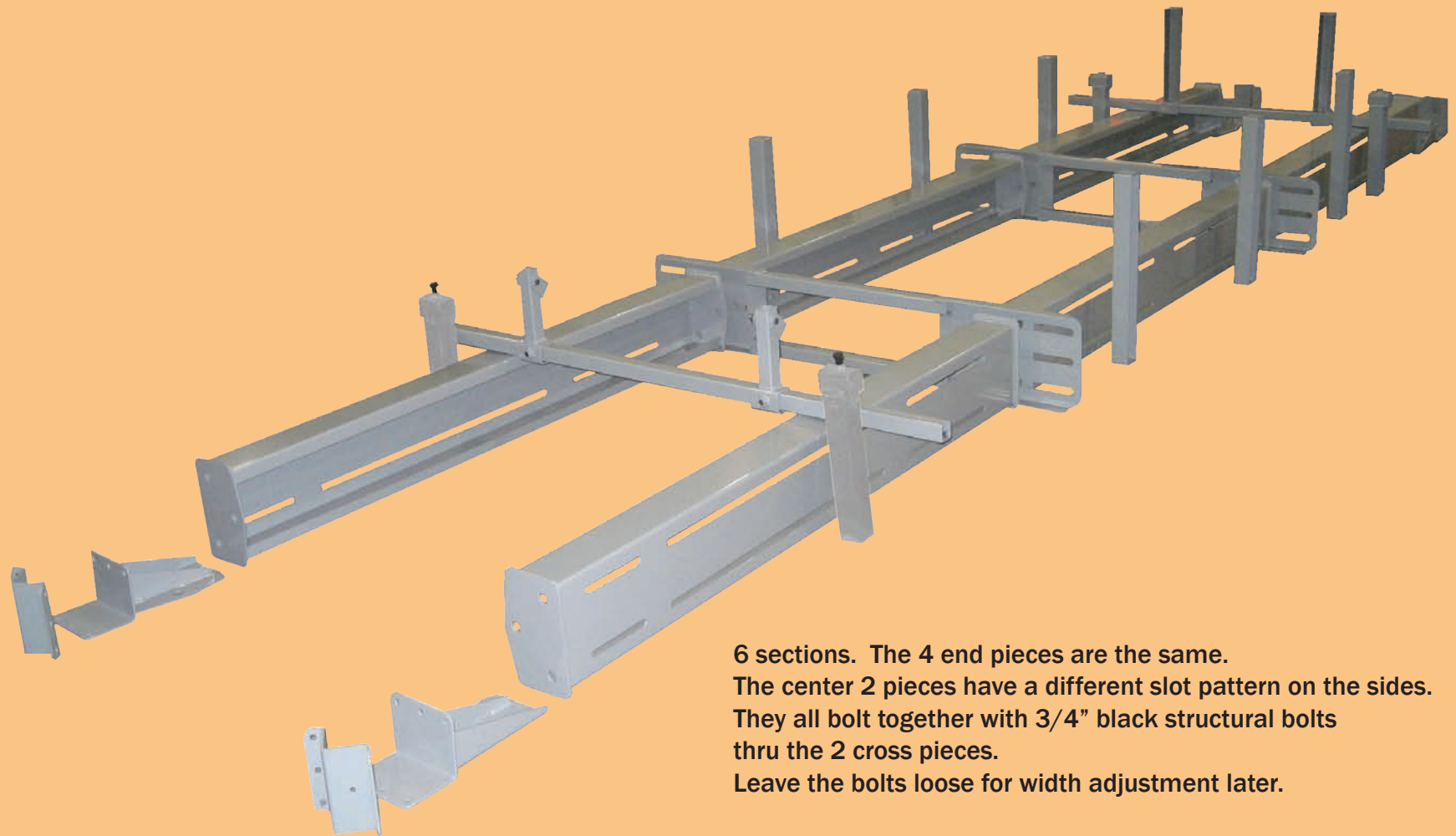
**AutoTwirler PLUS Rotisserie  
with the Corvette Subframe attachment**



***AutoTwirler<sup>®</sup>***

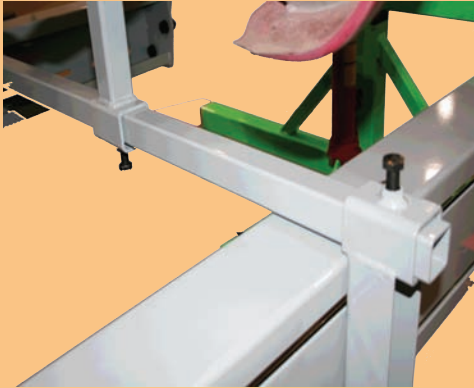
**675 N 600 W STE 2, LOGAN UTAH, 84321**

*email: [info@autotwirler.com](mailto:info@autotwirler.com) website: [www.autotwirler.com](http://www.autotwirler.com)*  
**3/23/15**



6 sections. The 4 end pieces are the same.  
The center 2 pieces have a different slot pattern on the sides.  
They all bolt together with 3/4" black structural bolts  
thru the 2 cross pieces.  
Leave the bolts loose for width adjustment later.

## AutoTwirler Corvette Subframe attachment Basic Layout

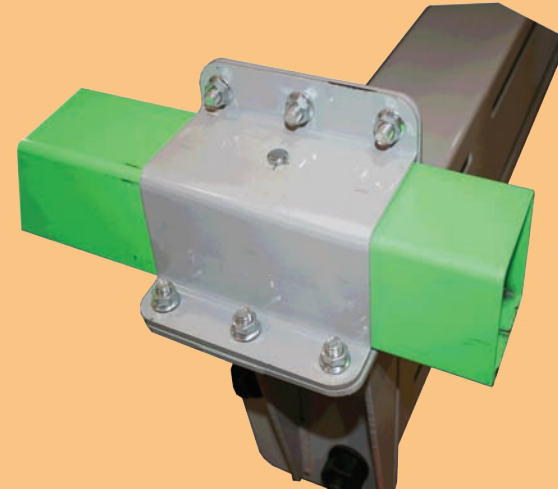


The 4 center uprights bolt directly to the body mounts in the center of the Corvette on the birdcage.

The front end mount has a cross member with 2 upright posts with pivots on them to mount to the bottom of the radiator core support.

The rear has taller center posts to bolt to the rear mounts near the gas tank.

Note that the cross member and the interior upright posts have 1/2" structural grade bolts that are pinch fit using pre-welded nuts on the tubing.



Rotisserie swing arm  
Shown in green.

There are 4 end brackets that slide over the rotisserie swing arm. They bolt together on the bottom to the Subframe Assembly using three (3) 3/4" structural bolts, the same as used in between the other sections. The top bracket is then clamped to the swing arm with six (6) 3/8" zinc plated bolts.



## AutoTwirler Corvette Subframe attachment Fastener Details